



**PANACHE**

Protected Area Network Across  
the Channel Ecosystem

LA MANCHE

un  
écosystème

deux  
projets

CONFERENCE FINALE -17-18 MARS 2015 - TORQUAY



**PANACHE**

Protected Area Network Across  
the Channel Ecosystem

THE ENGLISH CHANNEL

one  
ecosystem  
two  
projects

FINAL CONFERENCE - MARCH 17<sup>th</sup>-18<sup>th</sup> 2015 - TORQUAY

# Panache project's locations for vulnerable beach nesting birds



Chesil Beach

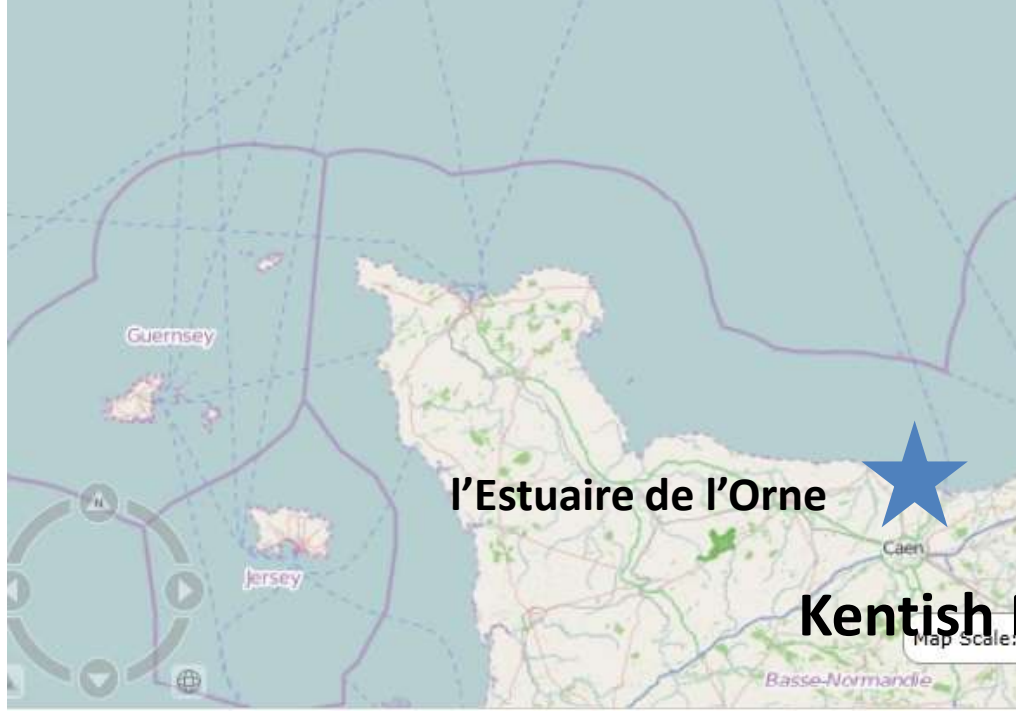
Langstone Harbour



Little Tern/ Sterne Naine



Plage de Loon, Le Clipon, Dunkerque



l'Estuaire de l'Orne



Kentish Plover/ Gravelot à collier interrompu

**Little tern/  
Sterne naine**



***Sternula albifrons***



North Atlantic Ocean

United Kingdom

Ireland

Germany

France

Spain

Portugal

Morocco

Algeria

Western Sahara

Mauritania

Mali

Niger

Guinea

Burkina Faso

Nigeria

Benin

Gulf of Guinea

Gabon

Angola

Zambia

Tanzania

Mozambique

Namibia

Zimbabwe

Madagascar

Denmark

Poland

Belarus

Ukraine

Romania

Austria

Italy

Greece

Turkey

Tunisia

Syria

Iraq

Iran

Saudi Arabia

Afghanistan

Pakistan

Oman

Yemen

Gulf of Aden

Arabian Sea

South Sudan

Ethiopia

Somalia

Kenya

DR Congo

Brazil

Guyana

Suriname

Paraguay

Argentina

Chile

Peru

Venezuela

Colombia

Ecuador

Guatemala

Belize

Honduras

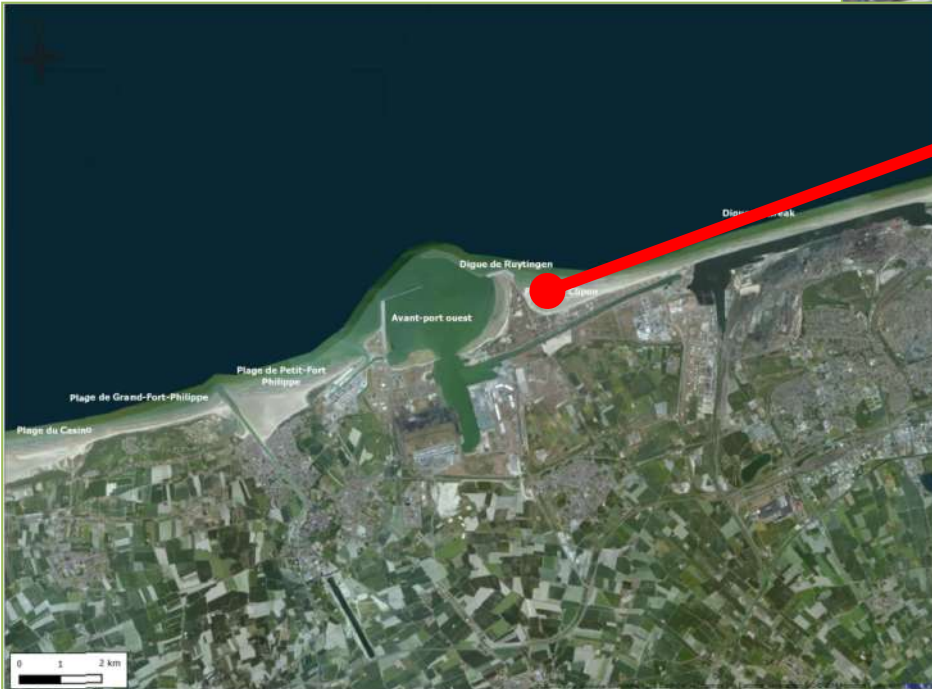
Nicaragua

Costa Rica

Panama







Clipon: original site of the Little terns colony.

≈350 pairs in 2005

Since 2010 : decline of population and low reproductive ind.

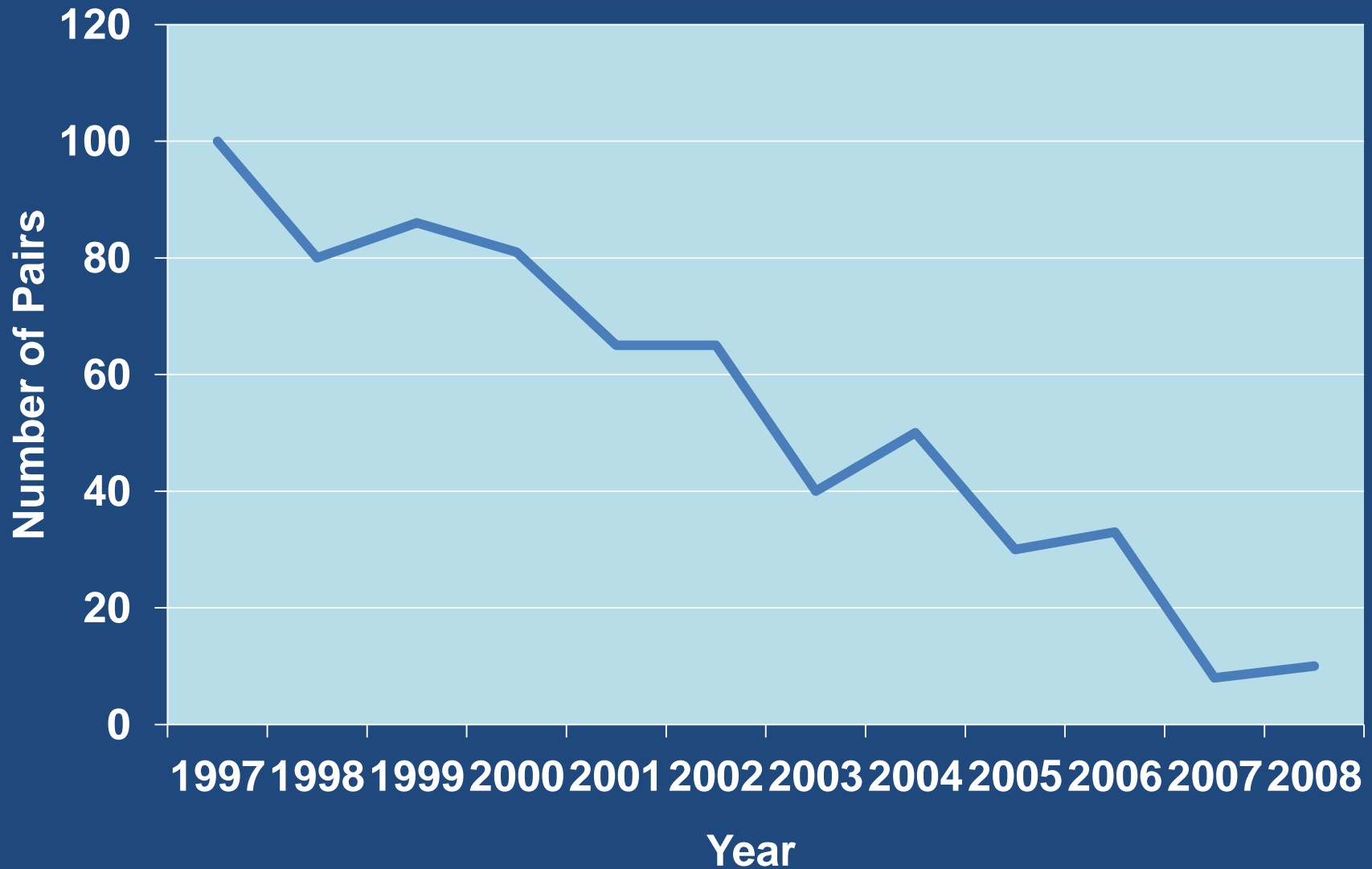


# Chesil Beach & Fleet Nature Reserve

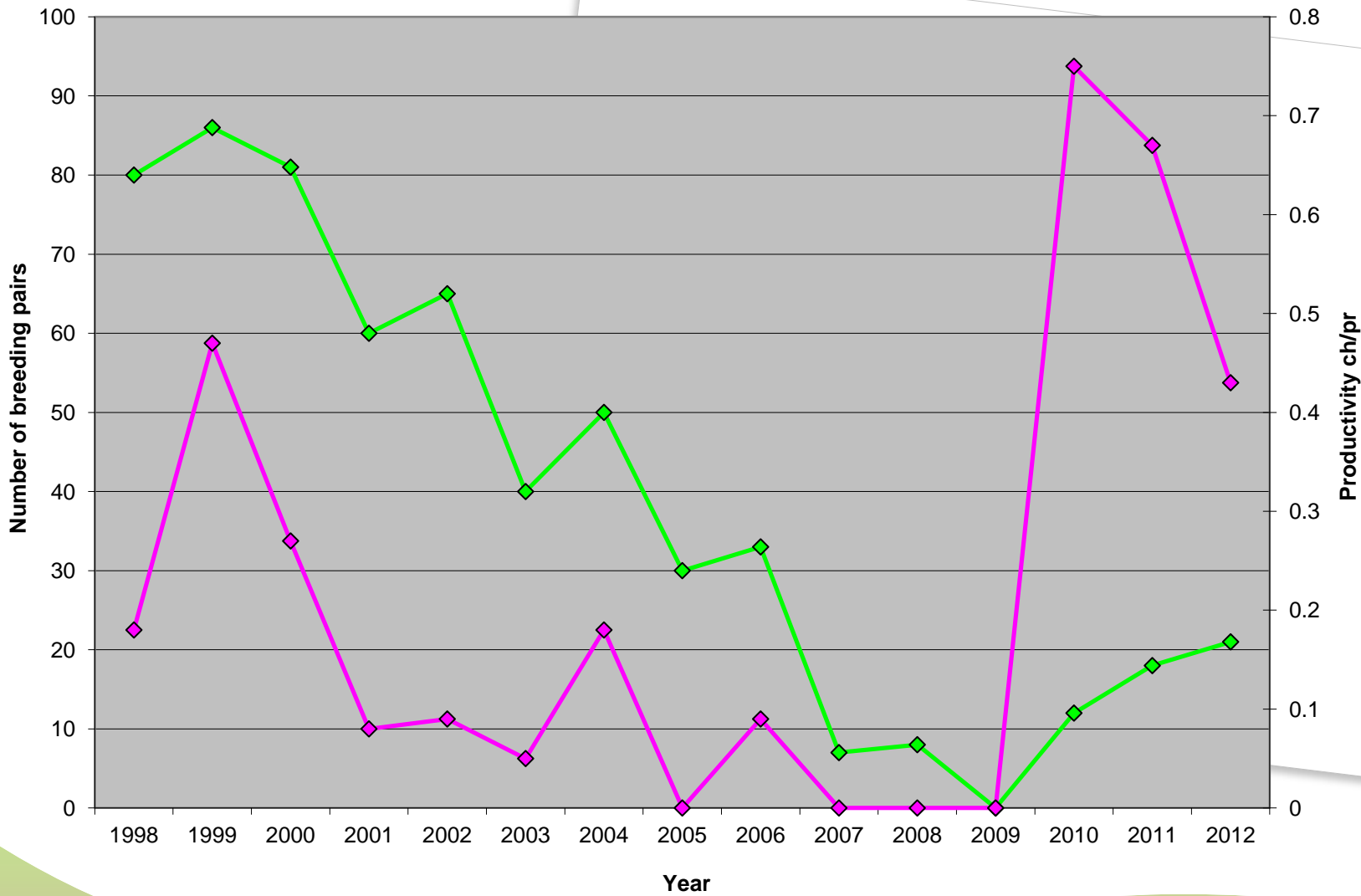




# Chesil Beach population trend



# Little tern breeding pairs and productivity at Chesil Beach and the Fleet from 1998 -2012



◆ Breeding pairs    ◆ Productivity

# Langstone Harbour



Hampshire & Isle of Wight  
Wildlife Trust

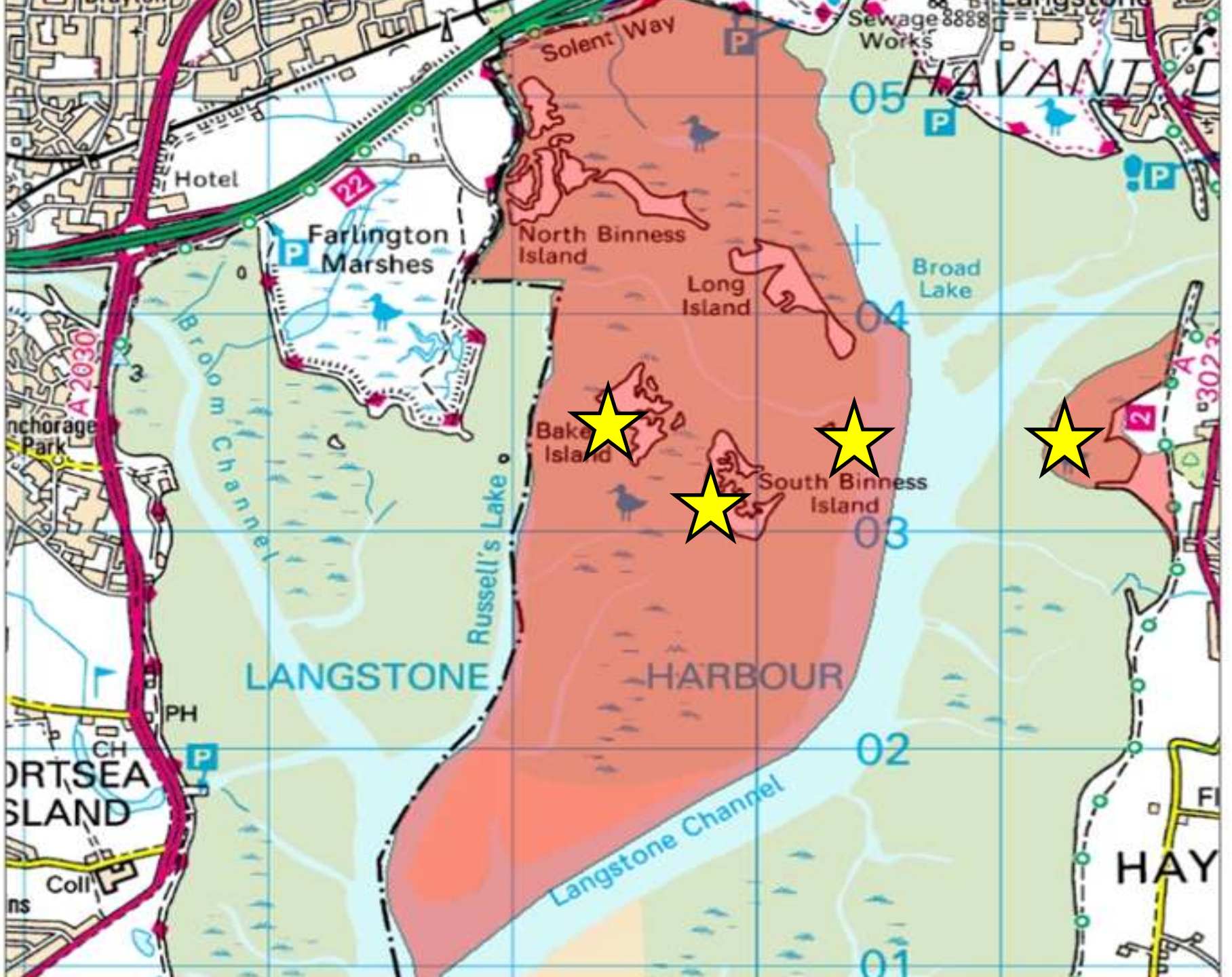
*Protecting wildlife. Inspiring people.*



**Havant**  
BOROUGH COUNCIL



giving  
nature  
a home



# 1988

Number of colonies:

15

Colonies with over 10 breeding pairs:

10

Total recorded breeding pairs:

487

# Decline in little terns in South East England

# 2014

Number of colonies:

7 (down 8)

Colonies with 10 + breeding pairs:

4 (down 6)

Total recorded breeding pairs:

73 (down 414)





**Loss of nests from spring tides and storm surges**

**Human disturbance**

**Predation**

**Lack of food**



**storms**



# After the storm

storms



**Colony areas raised one metre!**

**storms**



storms



**Big boats and heavy machines used to bring shingle ashore.**

storms



**Volunteer helping to crush cockle shells for spreading on nesting areas.**

storms



# Volunteers clearing vegetation on islands

# Gravel works at Clipon

storms



15/03/2013

storms



**Decoy terns made**



# Human disturbance



# Access prohibited

This is a seabird  
nesting site.

Disturbance will result in  
the loss of  
young seabirds.



**How many nests?**

**human**



human



**Fourteen!**

# Wind chill and disturbance

Pebbles  
are 'drafty'  
and sand  
has  
provided  
insulation



human

human



We put sand  
under about half  
those nesting on  
pebbles and they  
all accepted the  
change



human

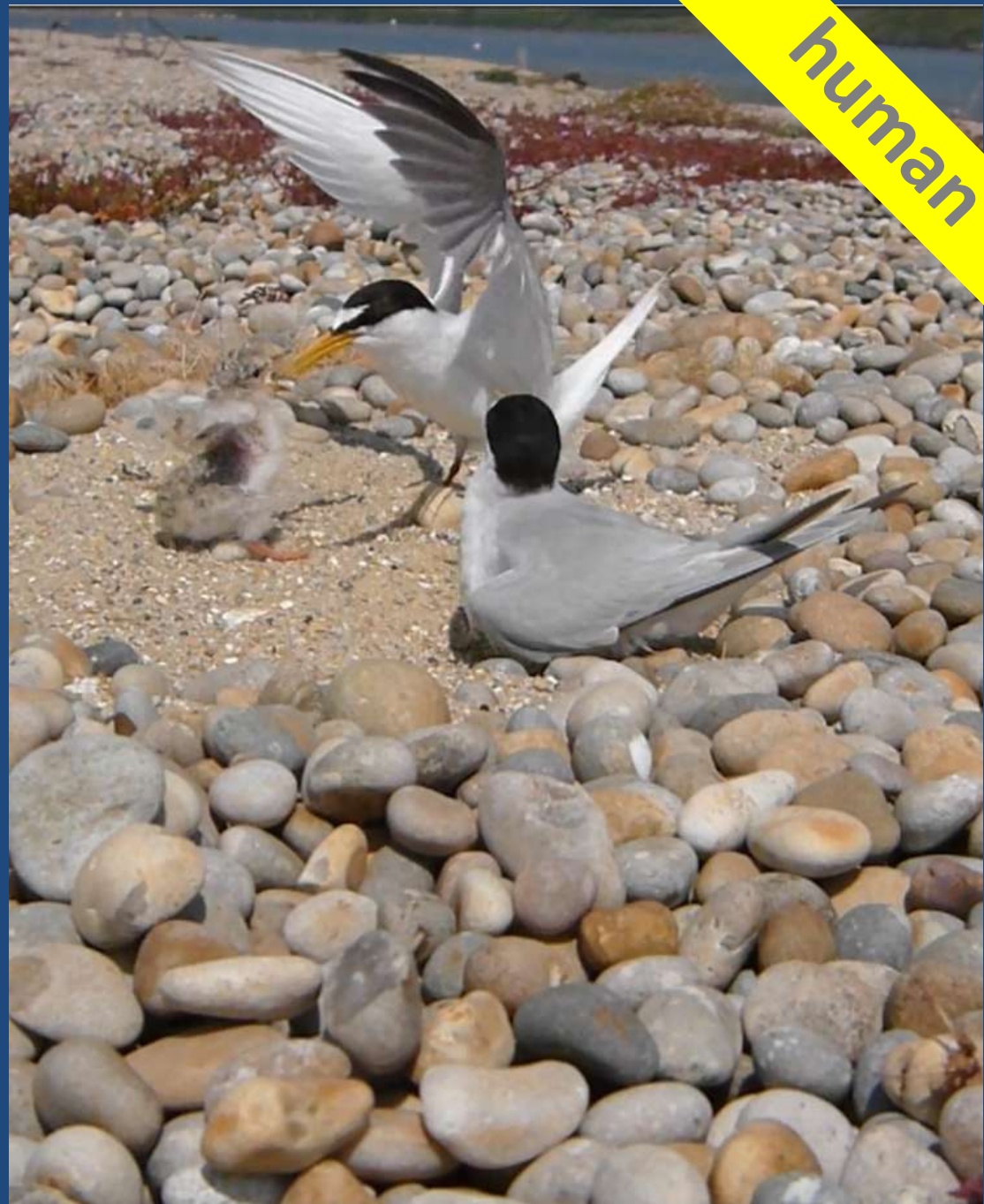
Almost  
half the  
birds  
chose to  
nest on  
sand





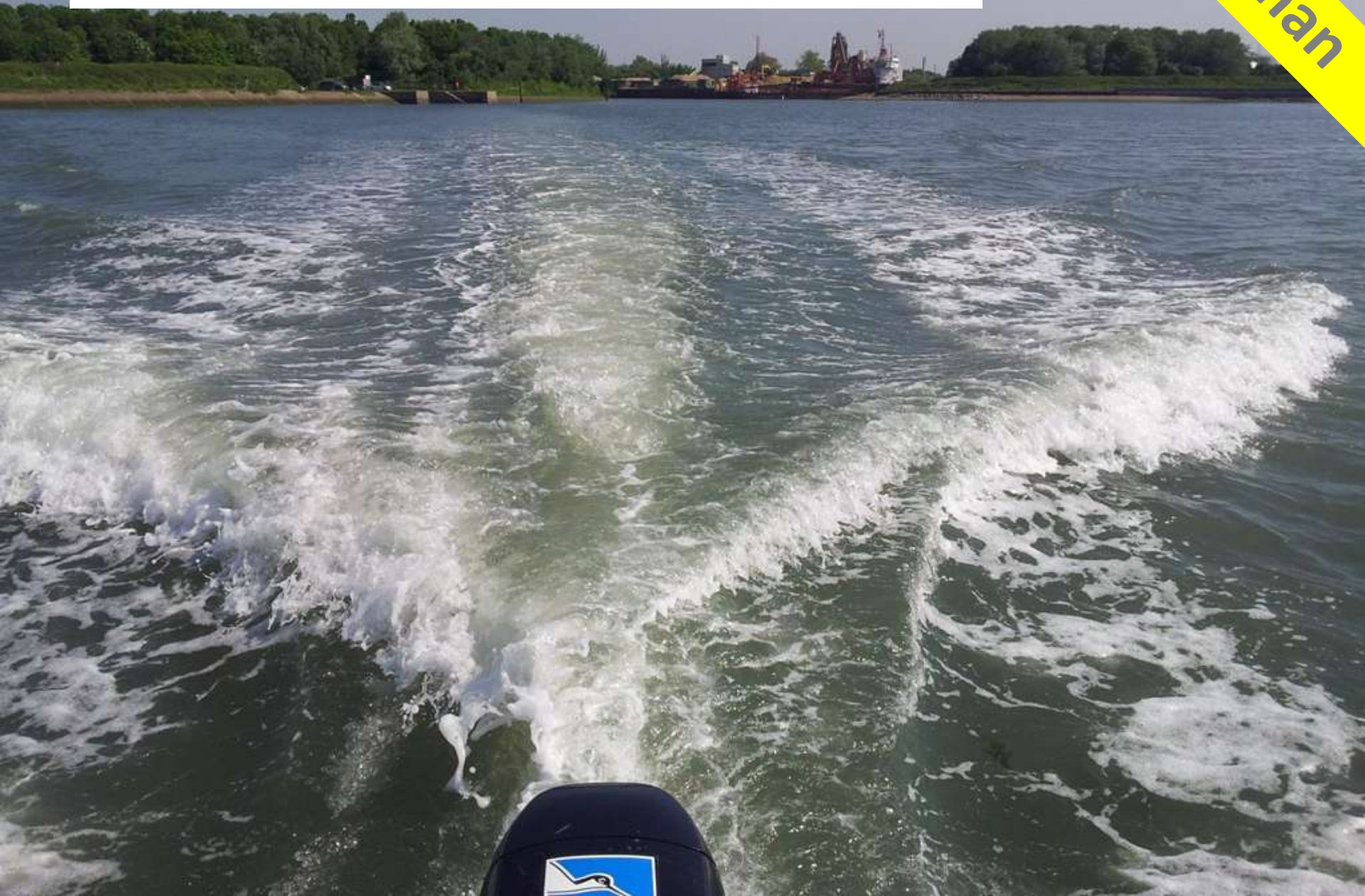
**Pebble nests  
23% hatched**

**Sand nests  
90% hatched**



# Fast action boat patrols

human



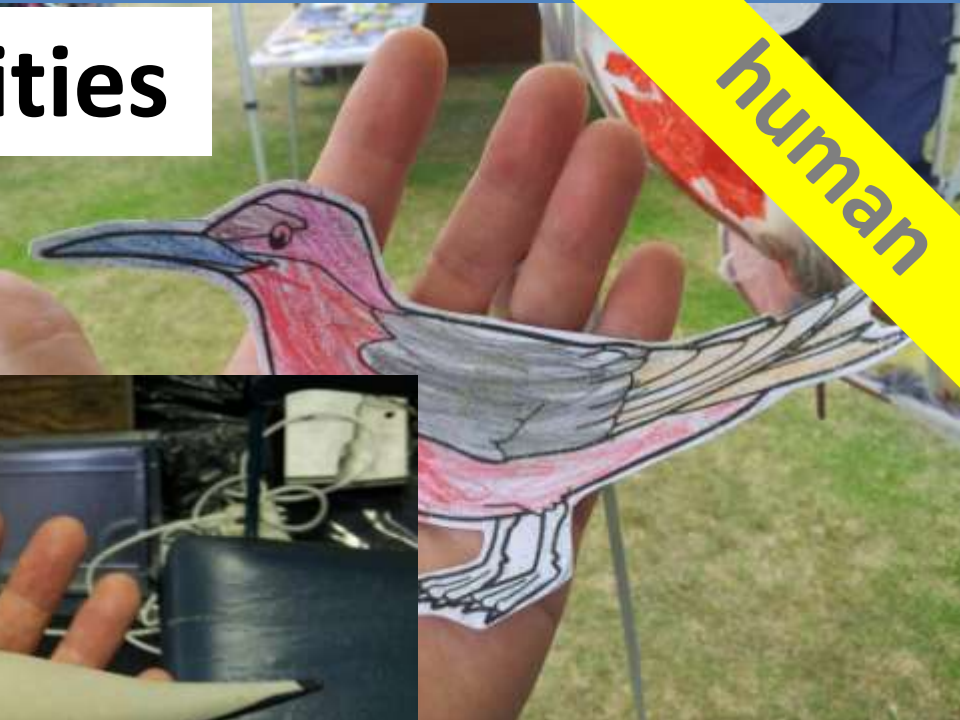
# Community engagement

human



# Activities

human



# Predation of eggs and chicks



# Electric anti predator fence Clipon

predation



# Solar powered anti predator fence Langstone

predation



predation

**Constant effort, staff  
and volunteers!**





# Diversionary feed for kestrels

predation



# Chick shelters against gulls and corvids

predation



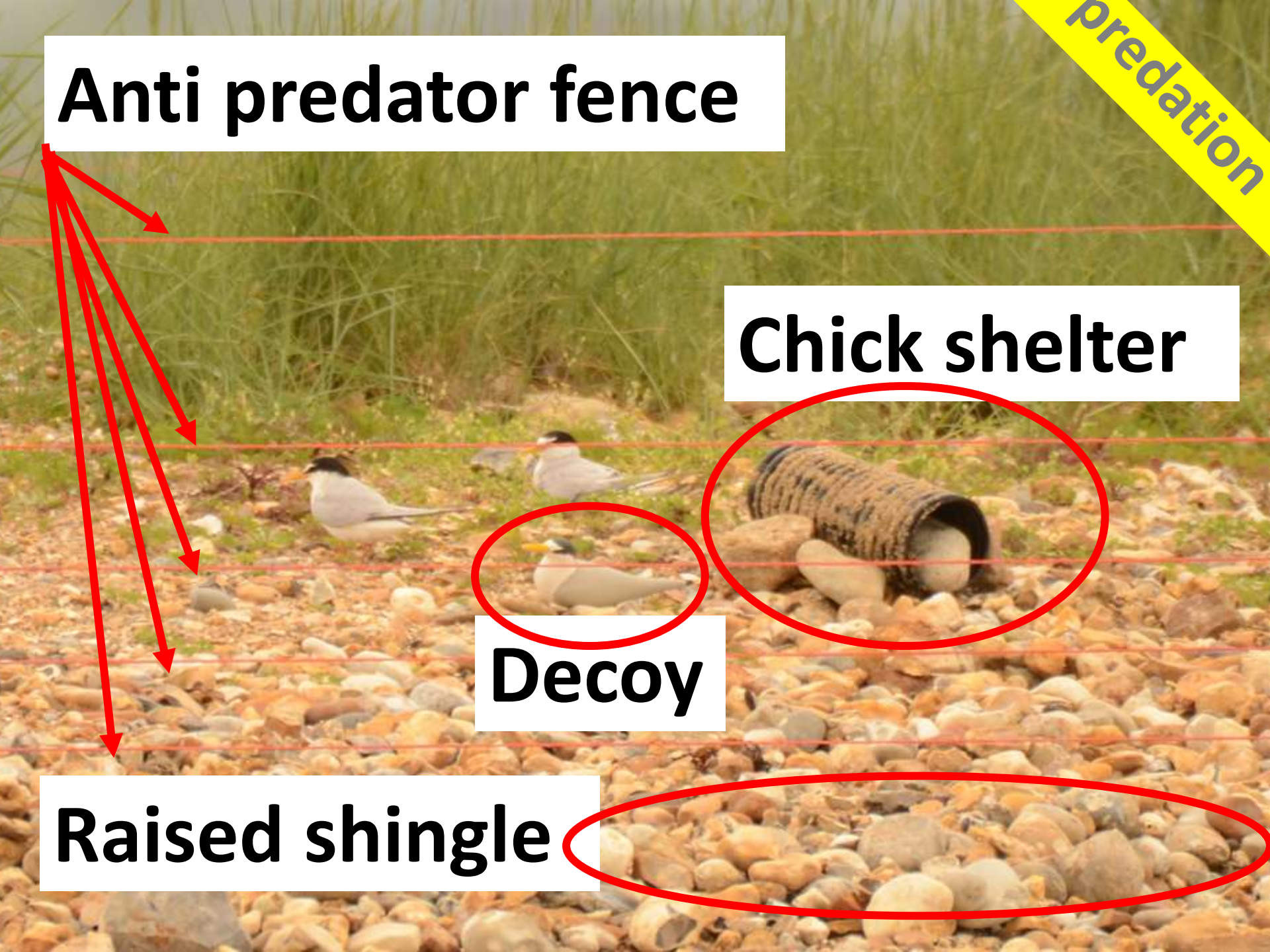
**Anti predator fence**

predation

**Chick shelter**

**Decoy**

**Raised shingle**



**Lack of food**





**Loss of nests from spring tides and storm surges**

**Human disturbance**

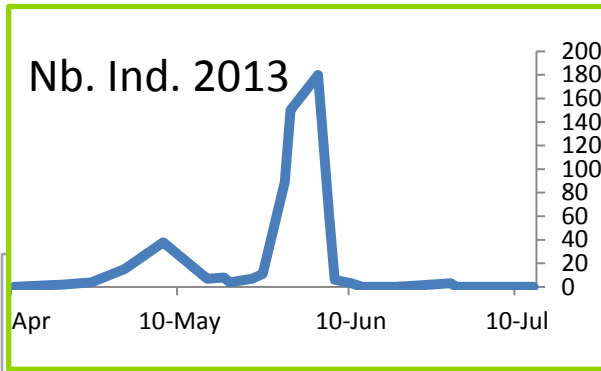
**Predation**

**Lack of food**

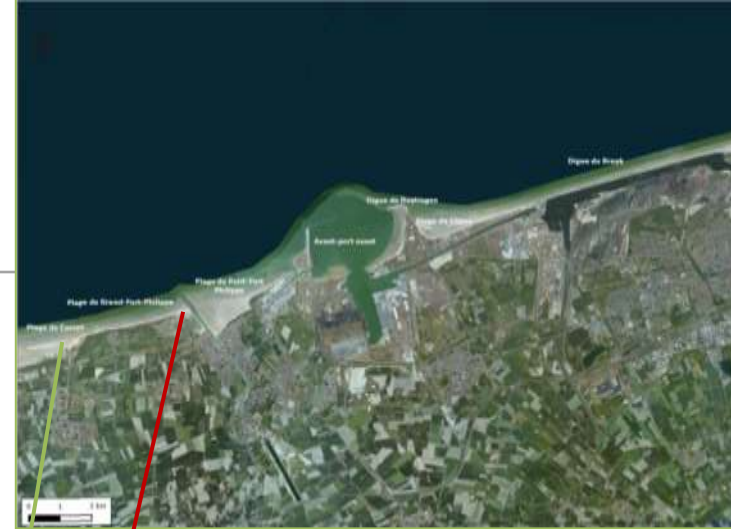
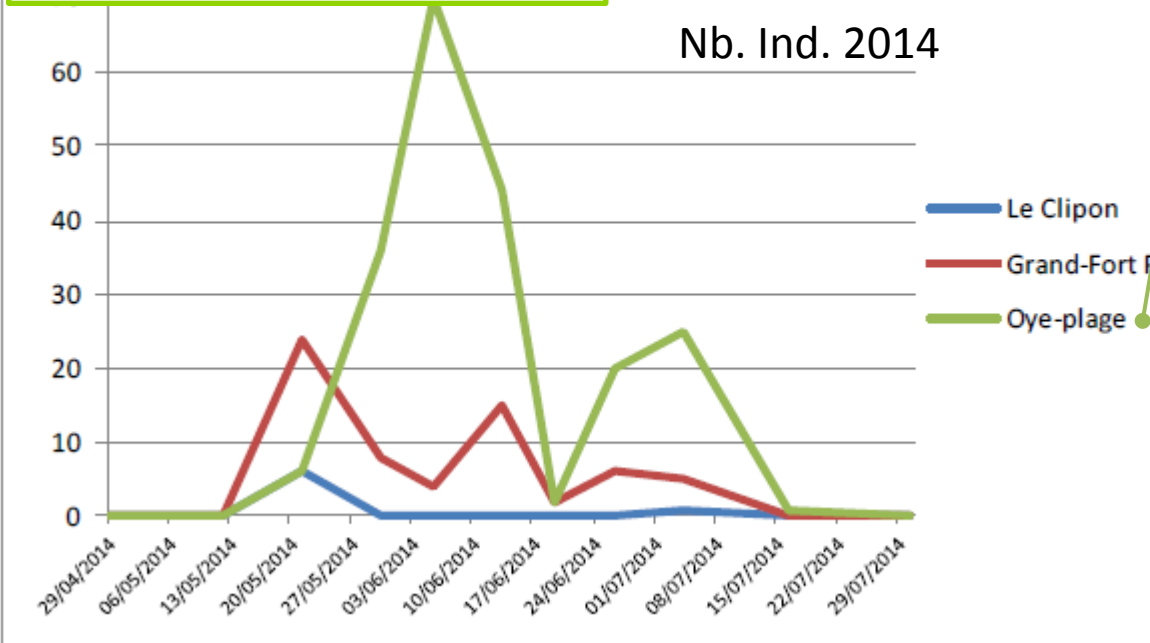
# Results of Panache funded works



# Results

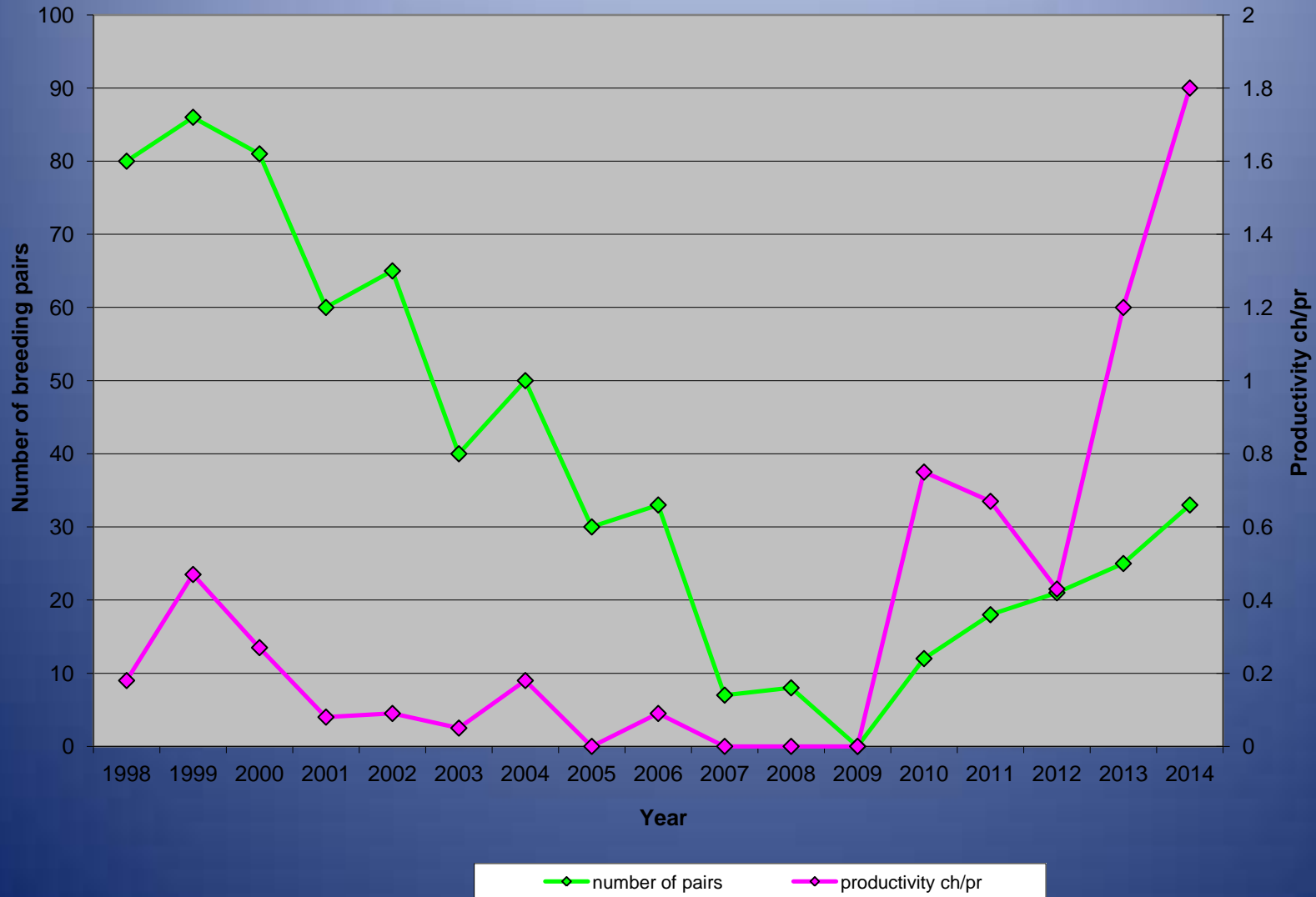


Nb. Ind. 2014



- Despite the various measures implemented on Clipon, there was no birth in 2013 & 2014. The decline of the colony is under way for several years and the disappearance of the colony seems inevitable.
- Two new breeding sites have appeared near the Clipon. But births are low, because flooding occurrence.

# Little tern breeding pairs and productivity at Chesil Beach and the Fleet from 1998 -2014





**Chesil Beach 33 pairs, 59 chicks, 1.8  
productivity chicks per pair**



**Langstone Harbour 32 pairs, 28 chicks,  
0.88 productivity chicks per pair**

# Two knowledge exchange visits



# What did we learn from Panache?

- How partners deal with **stakeholders**
- Varying **anti predator fencing**
- Optimal **grading of shingle**
- **Sand insulation**
- Habitat requirements of **Kentish plovers**
- Working with **IFCA**



# VALMER PANACHE

Protected Area Network Across the Channel Ecosystem



Hampshire & Isle of Wight Wildlife Trust  
*Protecting wildlife. Inspiring people.*



The VALMER and PANACHE projects were selected under the European cross-border cooperation programme INTERREG IV A France (Channel) - England, co-funded by the ERDF.