

Governance Mapping

Wendy Dodds, Plymouth
University

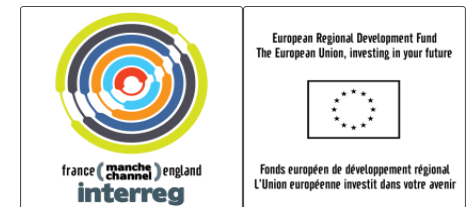
11th March 2014

VALMER Action 4.1

Analysis of the management
and governance frameworks in
the Western Channel and at
case study sites

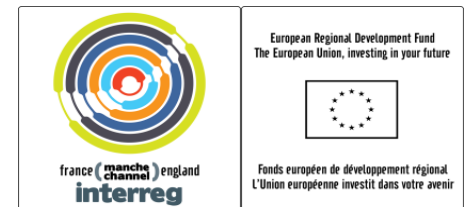


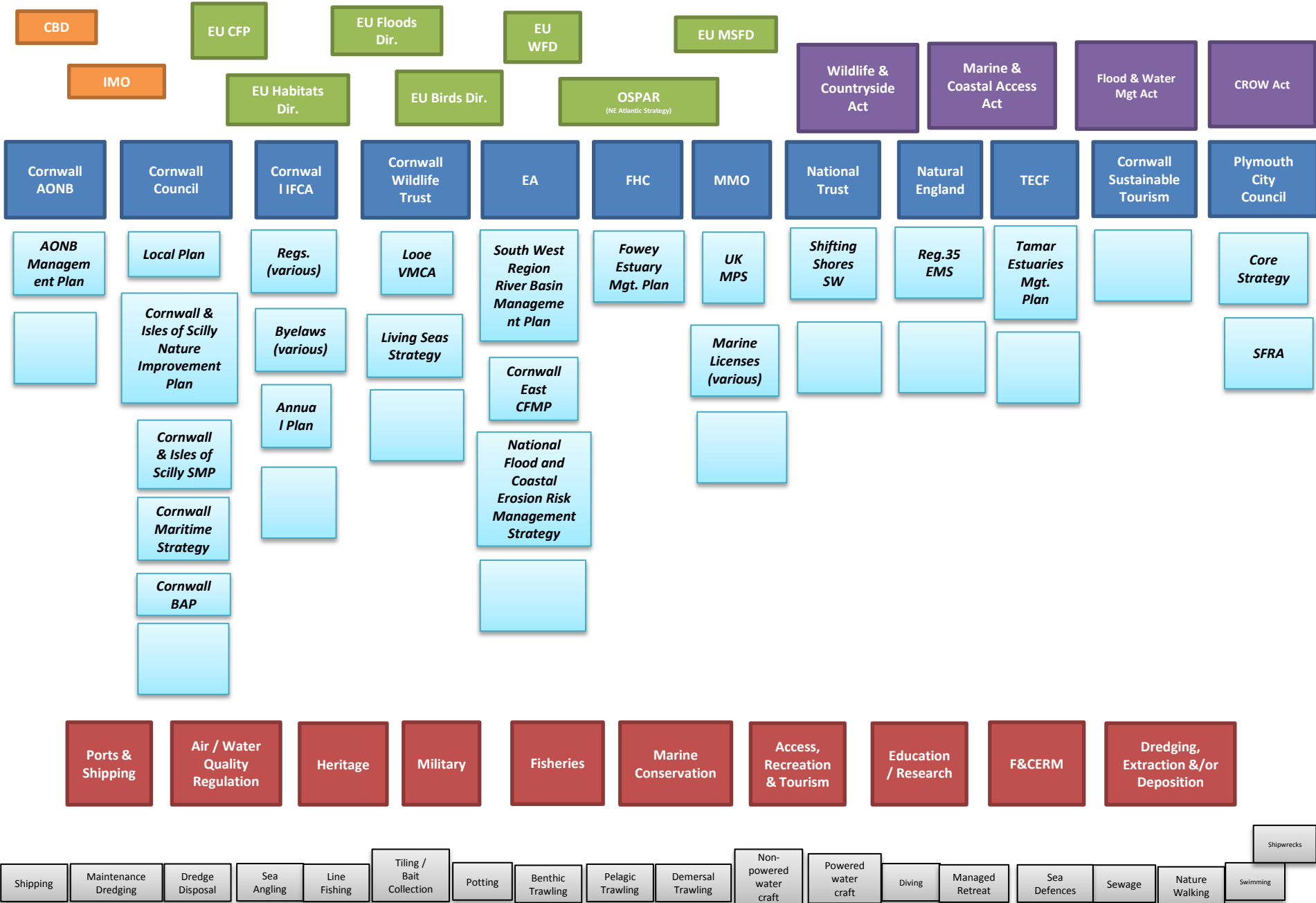
**MARINE &
COASTAL POLICY
WITH
PLYMOUTH
UNIVERSITY**



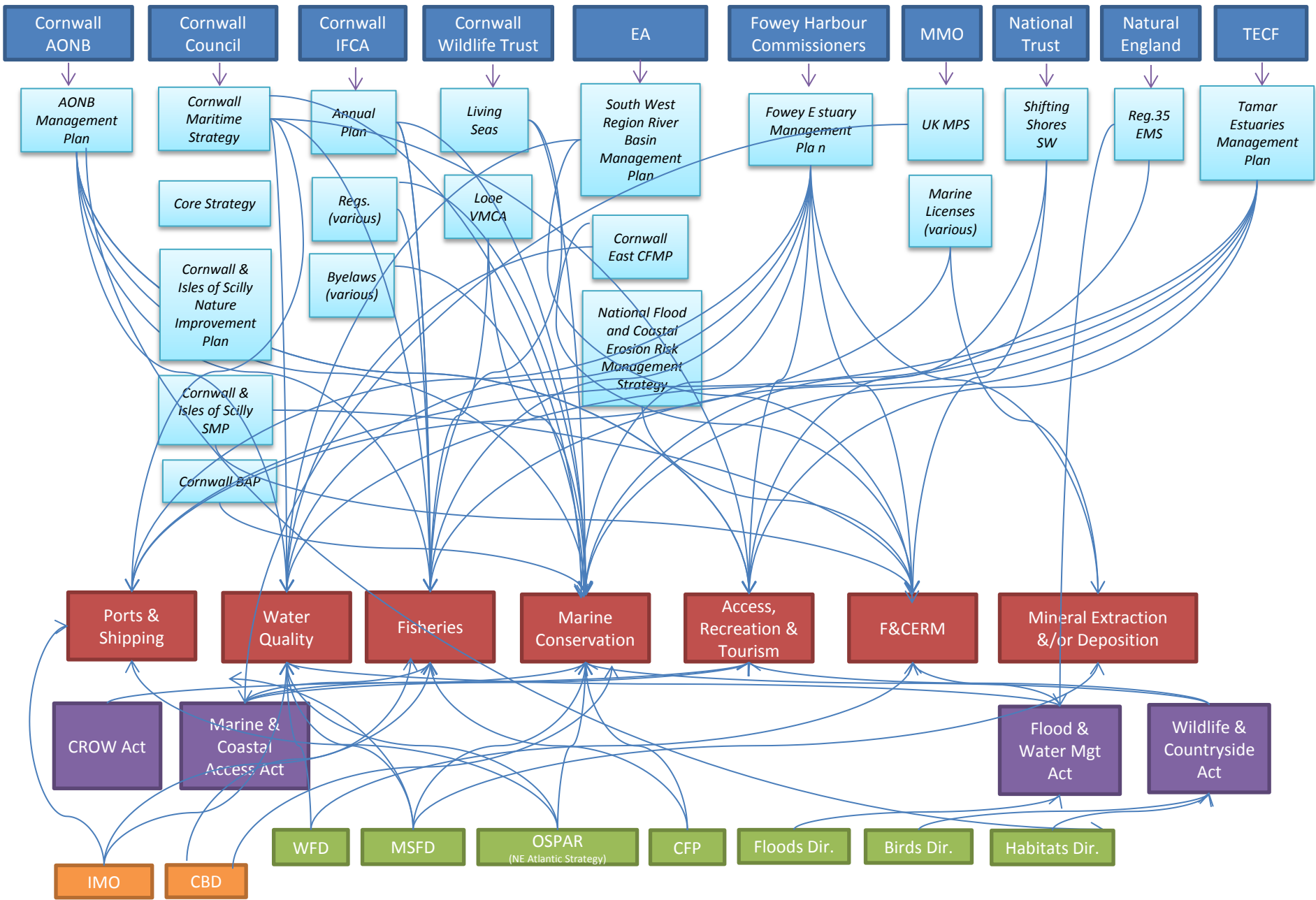
Governance Mapping

- Plymouth University, as part of VALMER's Work Package 4, is trialling methods to understand and map governance connections at the Plymouth-Fowey case study site
- To date this has been attempted in:
 - Powerpoint (see slides 2-5)
 - a web version developed by the MBA to support PU (see slide 5)
- The aspiration is to have the governance connections validated by the Task and Finish Group & to 'stitch' the governance mapping to the socio-ecological system that is being developed in parallel.





VALMER Plymouth-Fowey Task & Finish Group Governance Map (first attempt version 1) NO DRIVERS



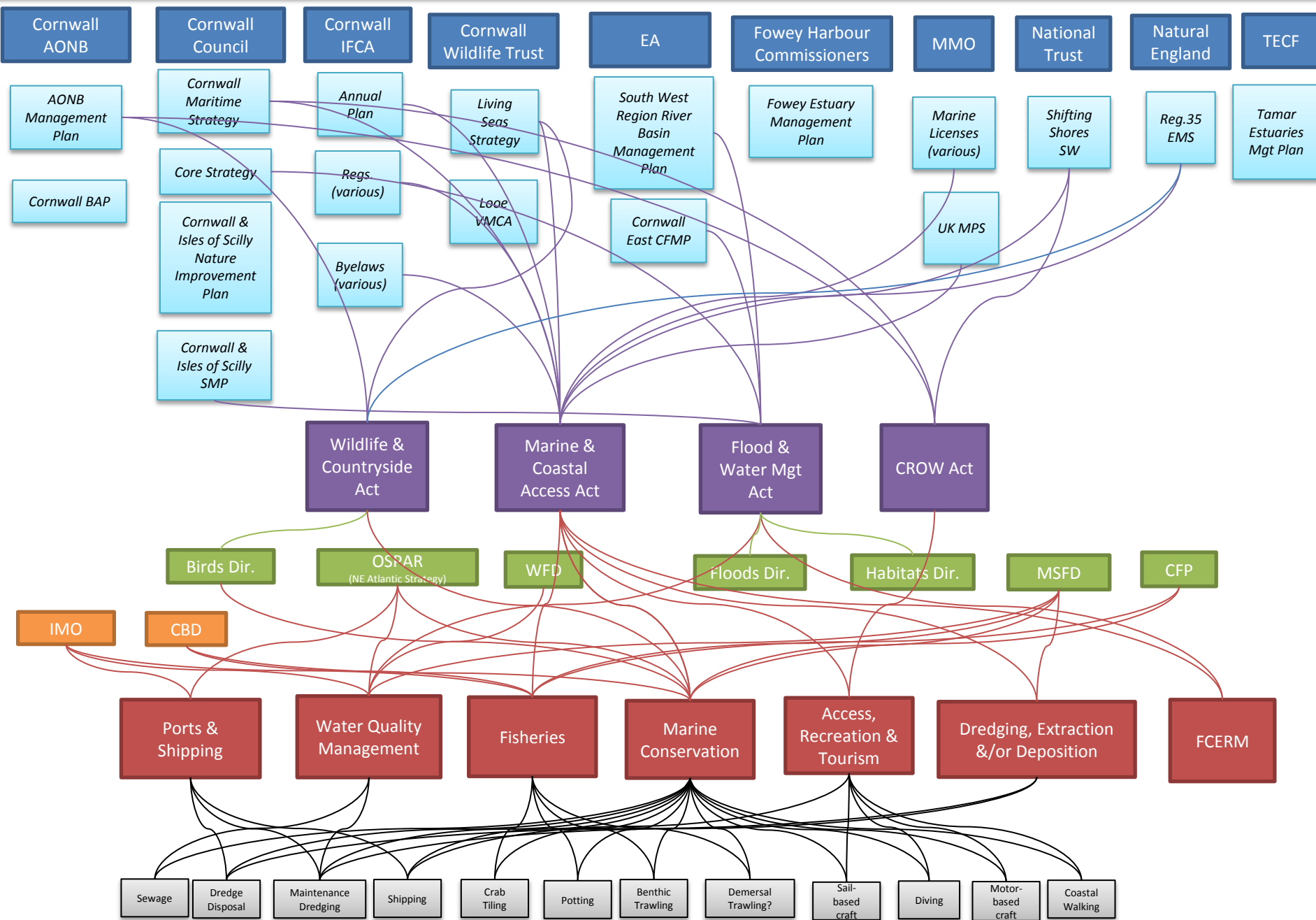
International

European

UK

Sector/ Activity

VALMER Plymouth-Fowey Task & Finish Group Governance Map *(T&F to legislation- NOT FINISHED)*



Governance Diagram



Click on a "node" below to highlight all related nodes in the diagram. To make all the nodes fully visible again, click anywhere on the page except a node.

Int: IMO

EU: Common Fisheries Policy

EU Floods Directive

EU Water Framework Directive

EU Habitats Directive

EU Birds Directive

EU Marine Strategy Framework Directive

NE Atlantic OSPAR

UK Flood & Water Management Act

UK Countryside & Rights of Way Act

UK Marine & Coastal Access Act

UK Wildlife & Countryside Act

Int: Convention on Biological Diversity

Cornwall AONB

Cornwall Council

Cornwall IFCA

Environment Agency

Fowey Harbour Commissioners

National Trust

Natural England

Plymouth City Council

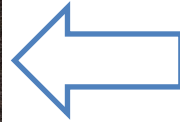
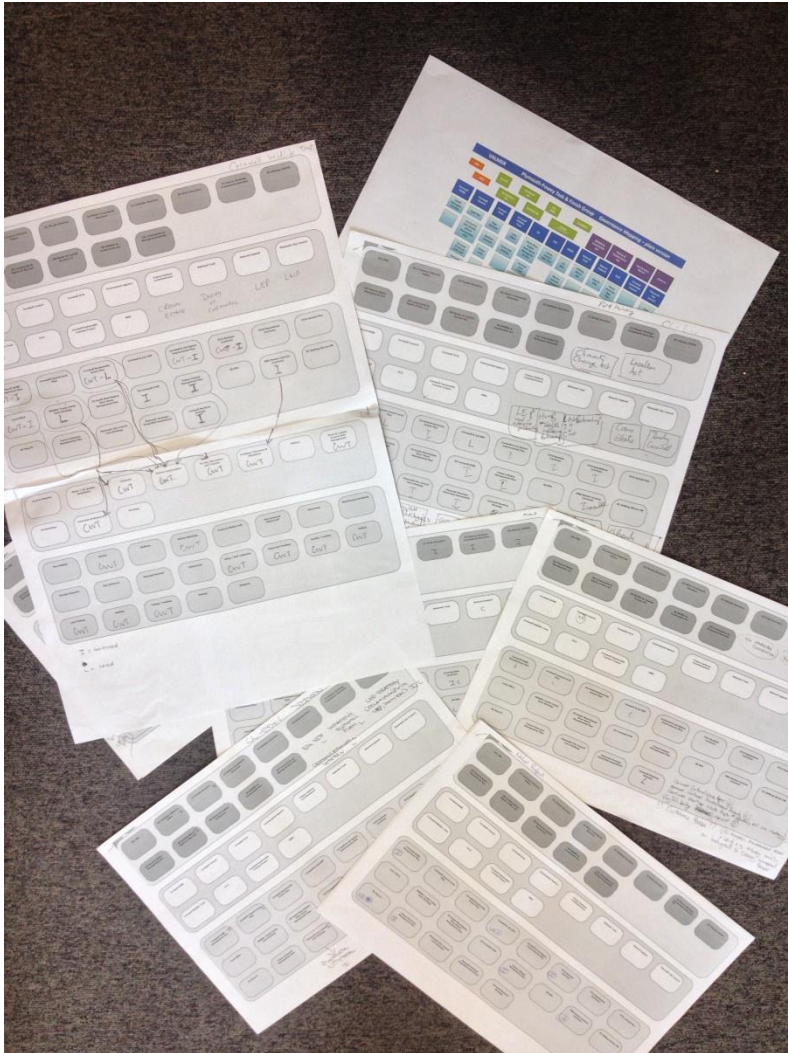
Cornwall

TECF

Cornwall

MMO

- By clicking on one of the boxes, all the related boxes are then highlighted – this can, therefore, be used to show governance connections between legislation, management organisations, their strategies, through to human activities and/or benefits.
- Sitting behind this screen is an excel file that contains all the individual nodes, shown in hierarchical levels and their connections.
- It is still draft!



- This is still being developed and we welcome suggestions on how to improve and make this form of visualisation useful for managers
- Thanks to those T&F members who gave their time at the meeting to input their governance knowledge
- I will be contacting those who weren't at the meeting to get their input
- An updated version will be made available to the T&F Group for the next meeting.